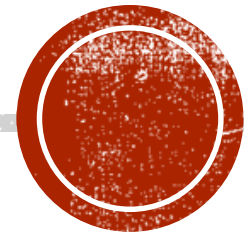


# YANKEE JIMS BRIDGE REPLACEMENT PROJECT

Notice of Preparation (NOP) for an EIR Meeting

February 6<sup>th</sup>, 2020



# NOTICE OF PREPARATION MEETING OVERVIEW

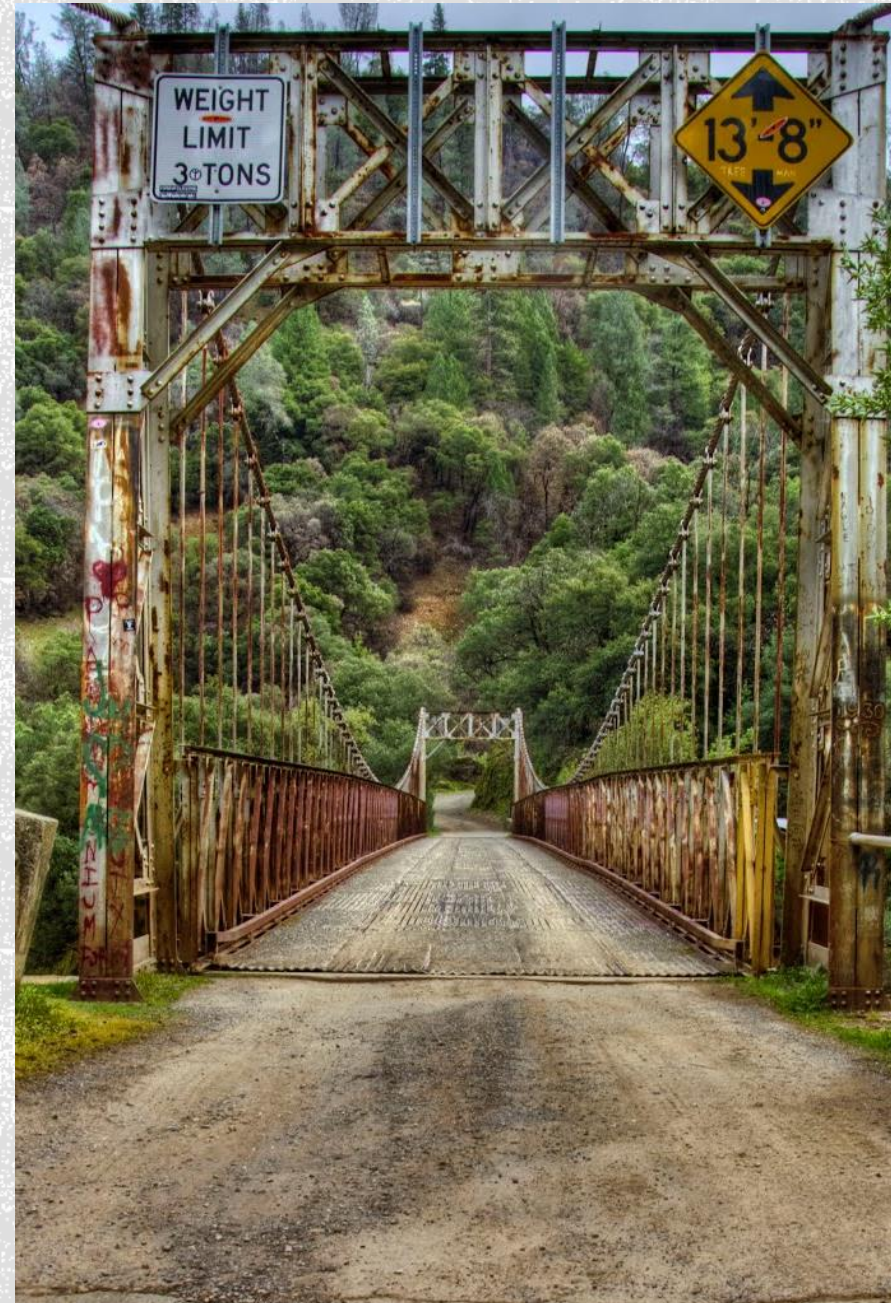
- Yankee Jims Bridge
- Introduce the project team
- Provide background
- Present the environmental impact report (EIR) process
- Obtain comments from the community and agencies












# YANKEE JIMS BRIDGE

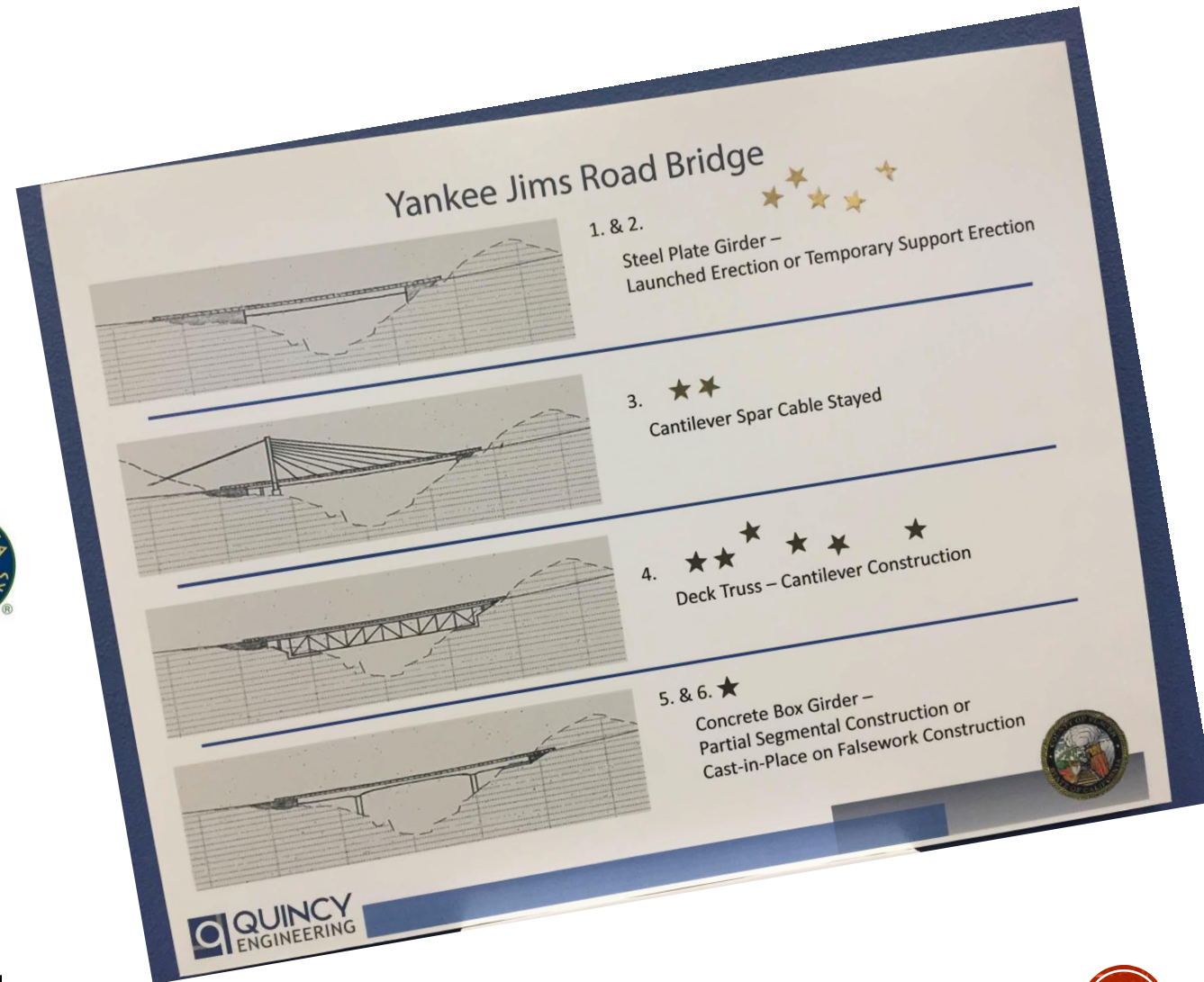
- Crosses the North Fork American River
- Recreational destination
- One lane suspension bridge
- Built in 1930
- Weight limit: 3 tons
- Structurally deficient
  - Caltrans Bridge Inspection Report 5/12/2016
- Cannot accommodate emergency vehicles
- Inadequate evacuation route





# BRIDGE FEASIBILITY STUDY

- Evaluated rehabilitation
  - Geometric and structural constraints
  - Would not accommodate emergency vehicle access or evacuation routes
- Ten bridge alternatives were created
- Technical Advisory Committee (TAC)
  -      
  -  – DPW, OES, R/W, Planning, Foresthill Forum (MAC)
- Two feasible alternatives
  - Arch Suspension Bridge
  - Steel Plate Girder Bridge
- Follow-up with additional stakeholders



# ALTERNATIVE 1 — LOOKING UPSTREAM RENDERING

- Welded Steel Plate Girder
- Conventional design
- Lowest profile
- Construction time over one year





# ALTERNATIVE 1 - LOOKING DOWNSTREAM RENDERING

- Welded Steel Plate Girder cont.
- Improve site distance
- Will involve closures on Colfax side
- Minimal closure on Foresthill side
- Identify uses of excavated material
- Increase parking access





# ALTERNATIVE 2 - LOOKING UPSTREAM RENDERING

- Arch Suspension Bridge
- More similar in appearance
- Taller profile
- Fast construction time





# ALTERNATIVE 2 - LOOKING DOWNSTREAM RENDERING

- Arch Suspension Bridge cont.
- Improve site distance
- Will involve closures on Colfax side
- Minimal closure on Foresthill side
- Identify uses of excavated material
- Increase parking access





# CONSTRUCTION CHALLENGES

- Road improvements
- Tree removal
- Staging
- Detour







# CONSTRUCTION CHALLENGES





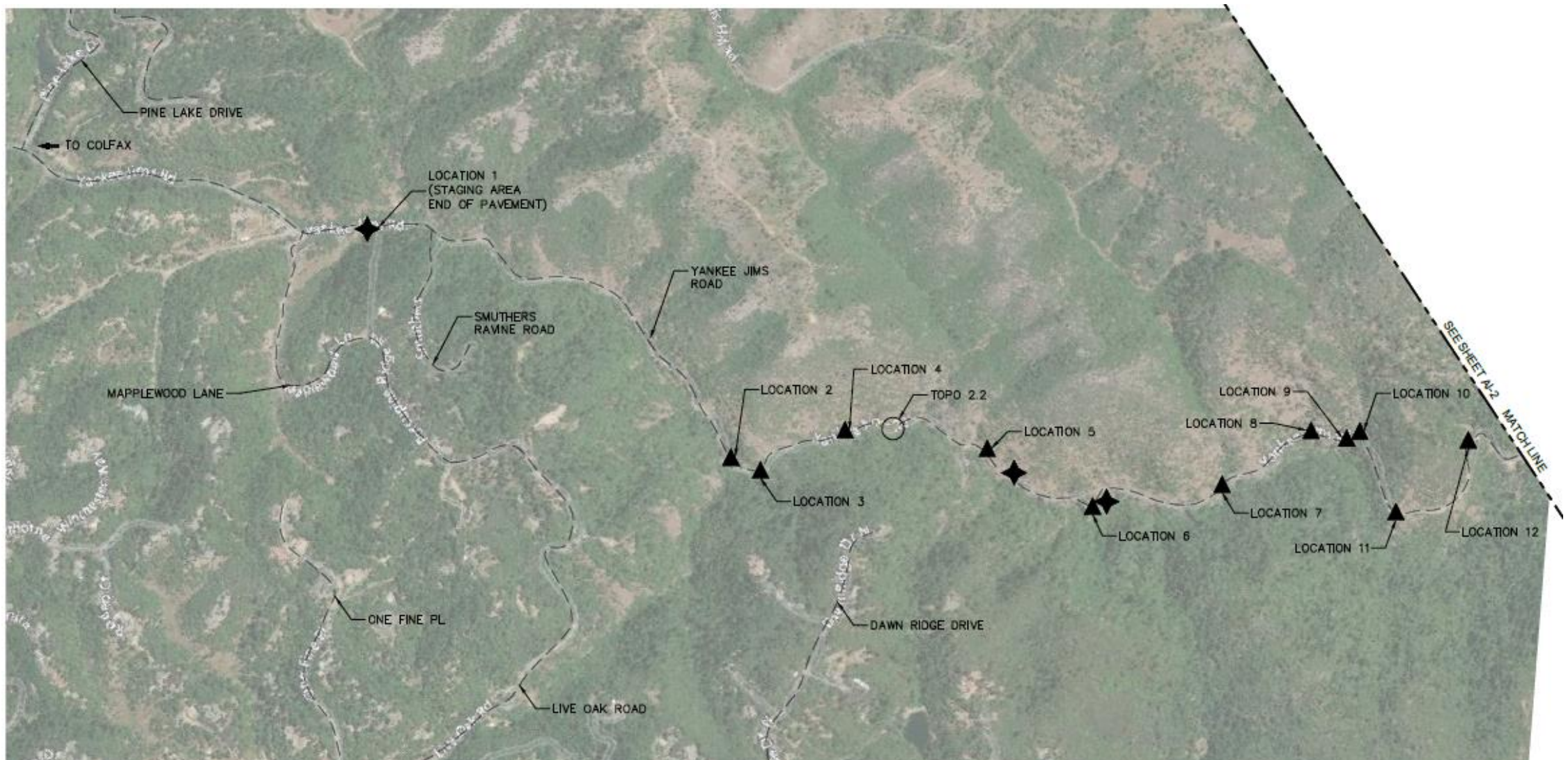


# CONSTRUCTION CHALLENGES



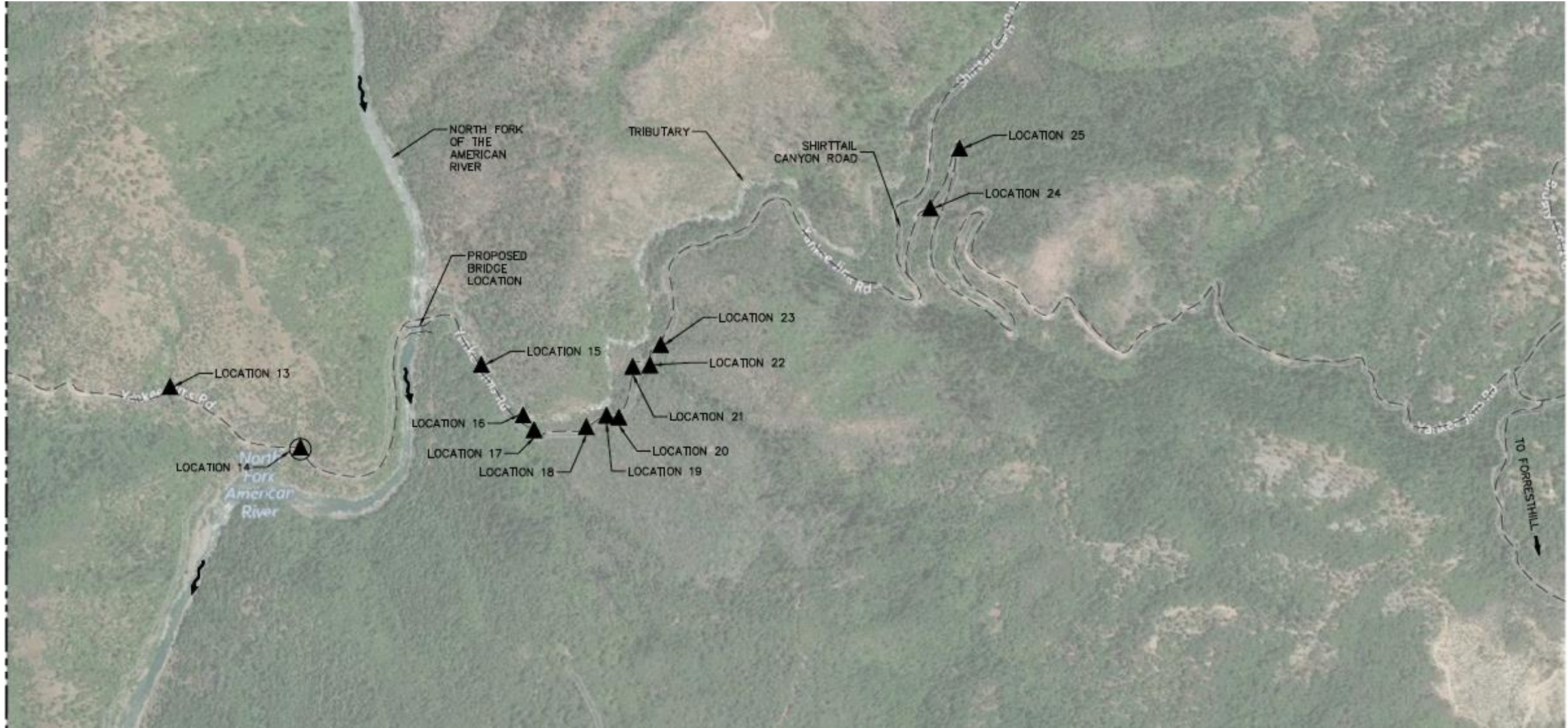


# POTENTIAL ACCESS IMPROVEMENT LOCATIONS





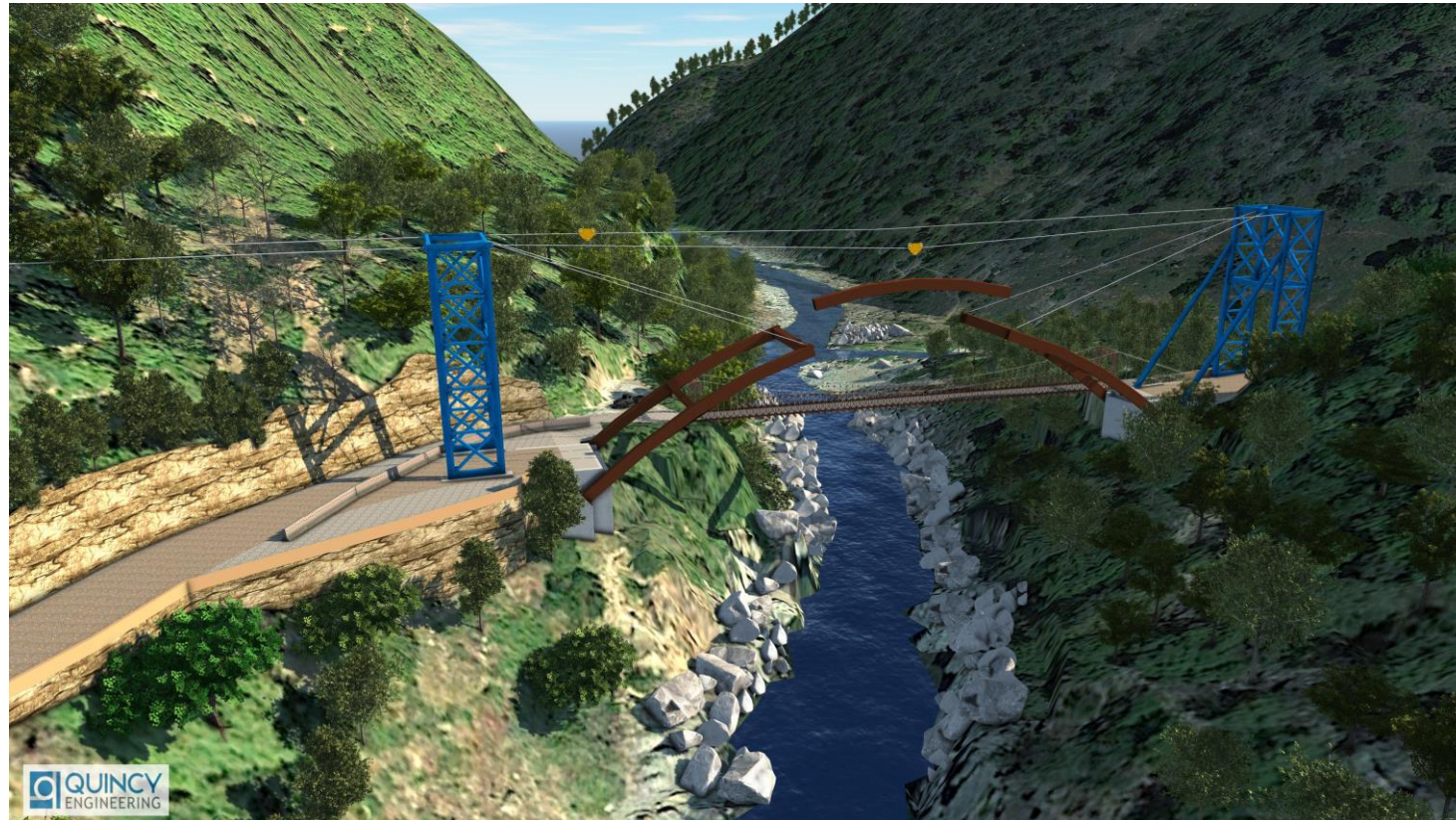
# POTENTIAL ACCESS IMPROVEMENT LOCATIONS CONT.





# RESPONSIVE DESIGNS

- Both alternatives provide a two-lane bridge
- Limited improved roadway approaches
- Improved pedestrian access
- More adequate evacuation route
- Minimize environmental impacts





# ENVIRONMENTAL PROCESS

- CEQA and NEPA requirements
  - Placer County, Caltrans, Bureau of Reclamation, and BLM
  - Notice of Preparation (NOP) for an Environmental Impact Report (EIR)

Aesthetics	Agriculture and Forestry Resources	Air Quality
Biological Resources	Cultural Resources	Energy
Geology / Soils	Greenhouse Gas Emissions	Hazards & Hazardous Materials
Hydrology / Water Quality	Land Use / Planning	Mineral Resources
Noise	Population / Housing	Public Services
Recreation	Transportation	Tribal Cultural Resources
Utilities / Service Systems	Wildfire	Mandatory Finding of Significance



# AESTHETICS

- Considerations for drivers and recreational users
- Visual character of the area
- Visual Impact Assessment
- Minimization measures





# BIOLOGICAL AND CULTURAL RESOURCES

- Area of Potential Effect (APE) map created
- Aquatic species
- Migratory birds
- Natural Environment Study
- Biological Assessment
- Historic Resource Evaluation Report
  - Historic Property Survey Report
  - Archaeological Survey Report





# RECREATIONAL IMPACTS

- Within the Auburn State Recreation Area (SRA)
- North Fork American River
  - Rafters, hikers, sightseers
- Parking
- Section 4(f) evaluation will be prepared





**THANK YOU!**

